



# Vinyl Composition Tile (VCT) Replacement Procedure

November, 2023

Armstrong Flooring™ Vinyl Composition Tile

# Tools and Accessories



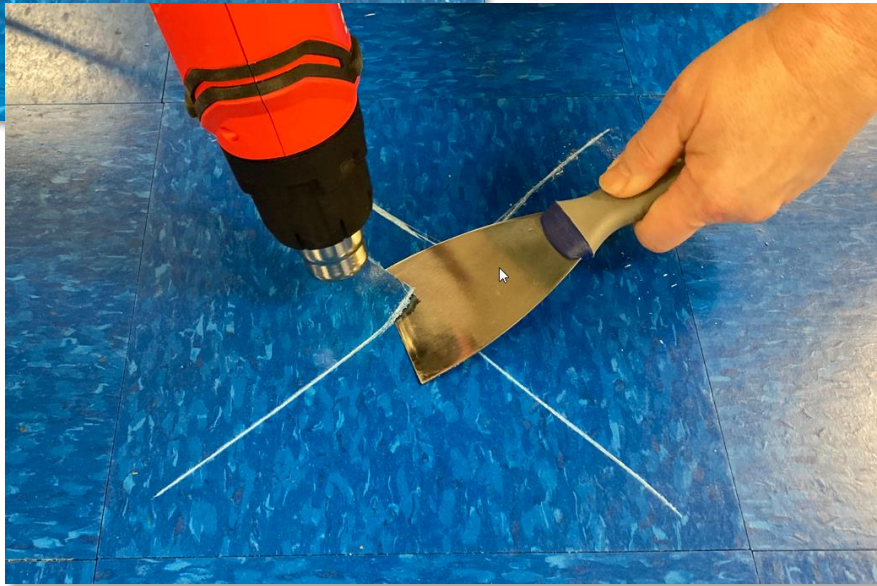
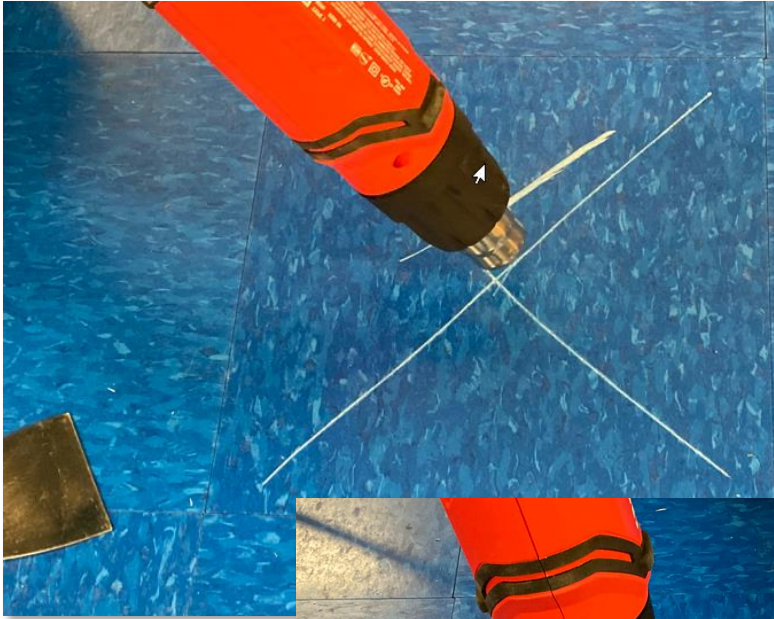
- Replacement vinyl composition tile
- Stiff scraper (paint scraper, 10 in 1 tool, etc.)
- Heat gun
- Utility knife
- VCT adhesive
- Fine notched trowel or paint brush
- Cement patching material (if needed)
- Hand roller used for flooring installation

# Score the Tile



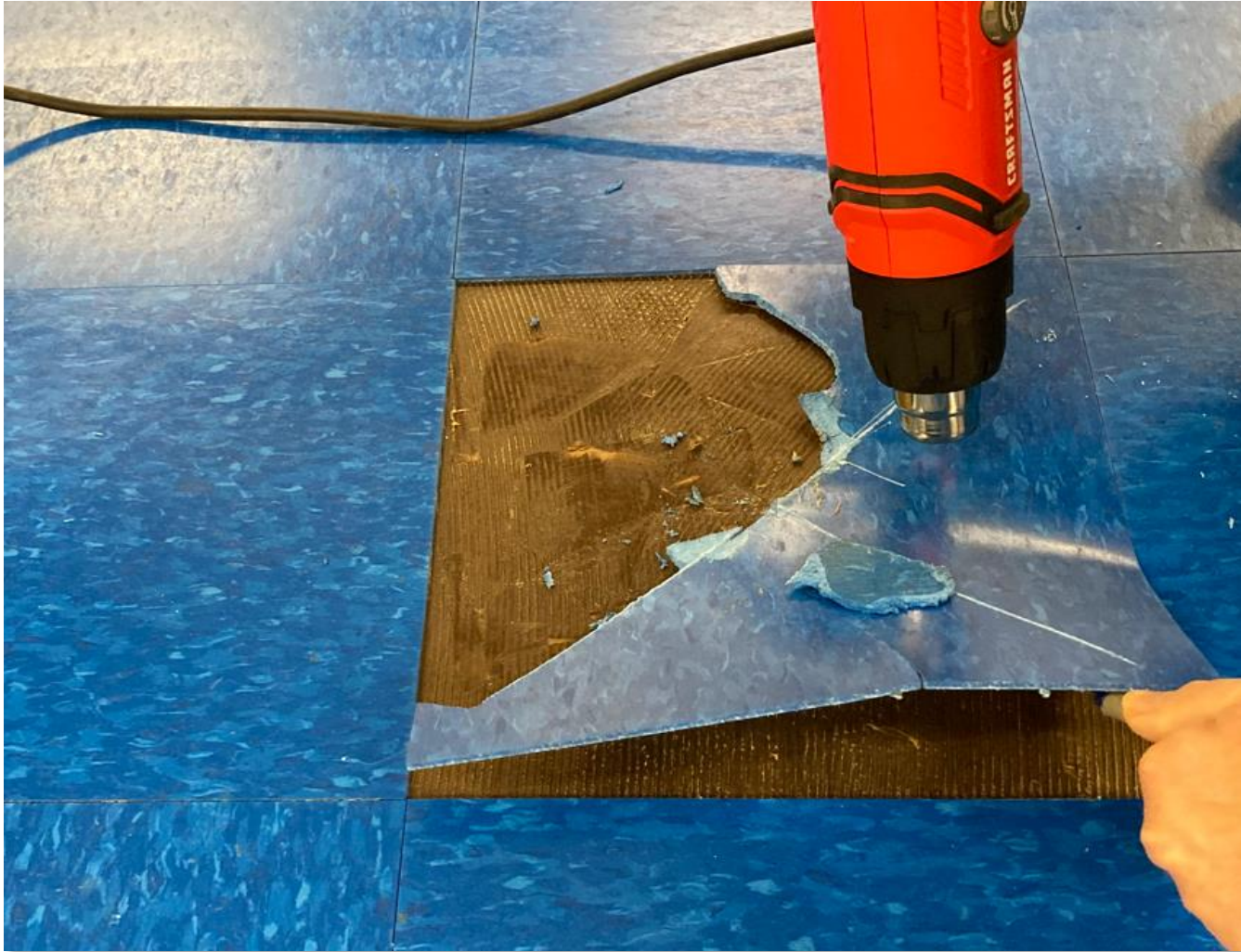
- Score the damaged tile in an “X” pattern, being careful not to score the surrounding tiles.

# Remove the Tile



- Use the heat gun to apply heat in the center of the tile. Once the area is softened, use the scraper in the middle of the cut and work toward the edges. Keep the heat gun in continual motion.
- Continue using heat gun and scraper and work toward the edge as tile softens.

# Remove the Tile



- Continue using heat gun and scraper and work toward the edge as tile softens.

# Clean and Prep the Area



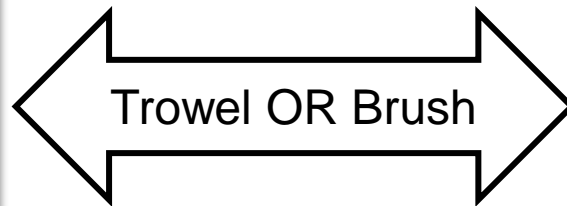
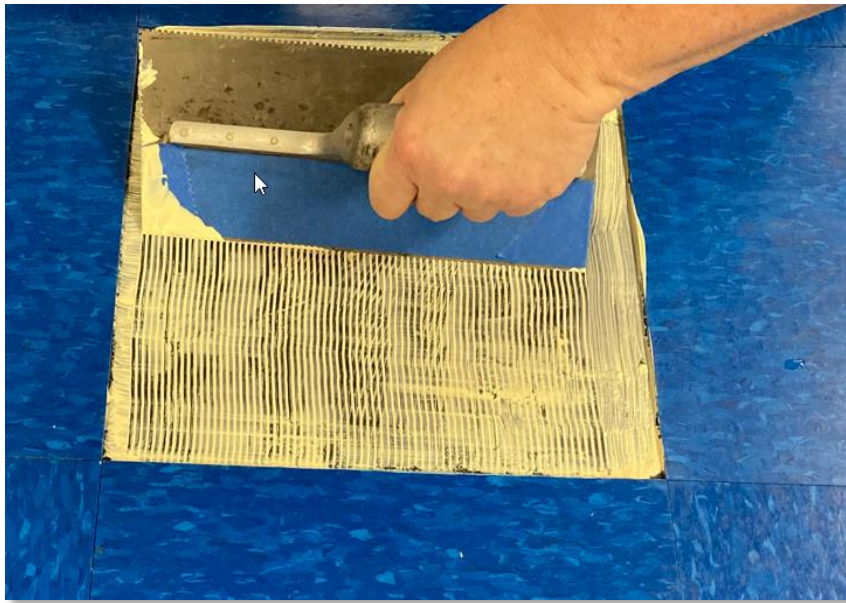
Clean up area to receive new tile

- Remove adhesive ridges using a scraper.
- Adhesives must be left so that no ridges or puddles are evident and what remains is a thin, smooth film.
- If needed, mix cementitious patch mixture as directed and smooth surface by filling in divots or low spots.

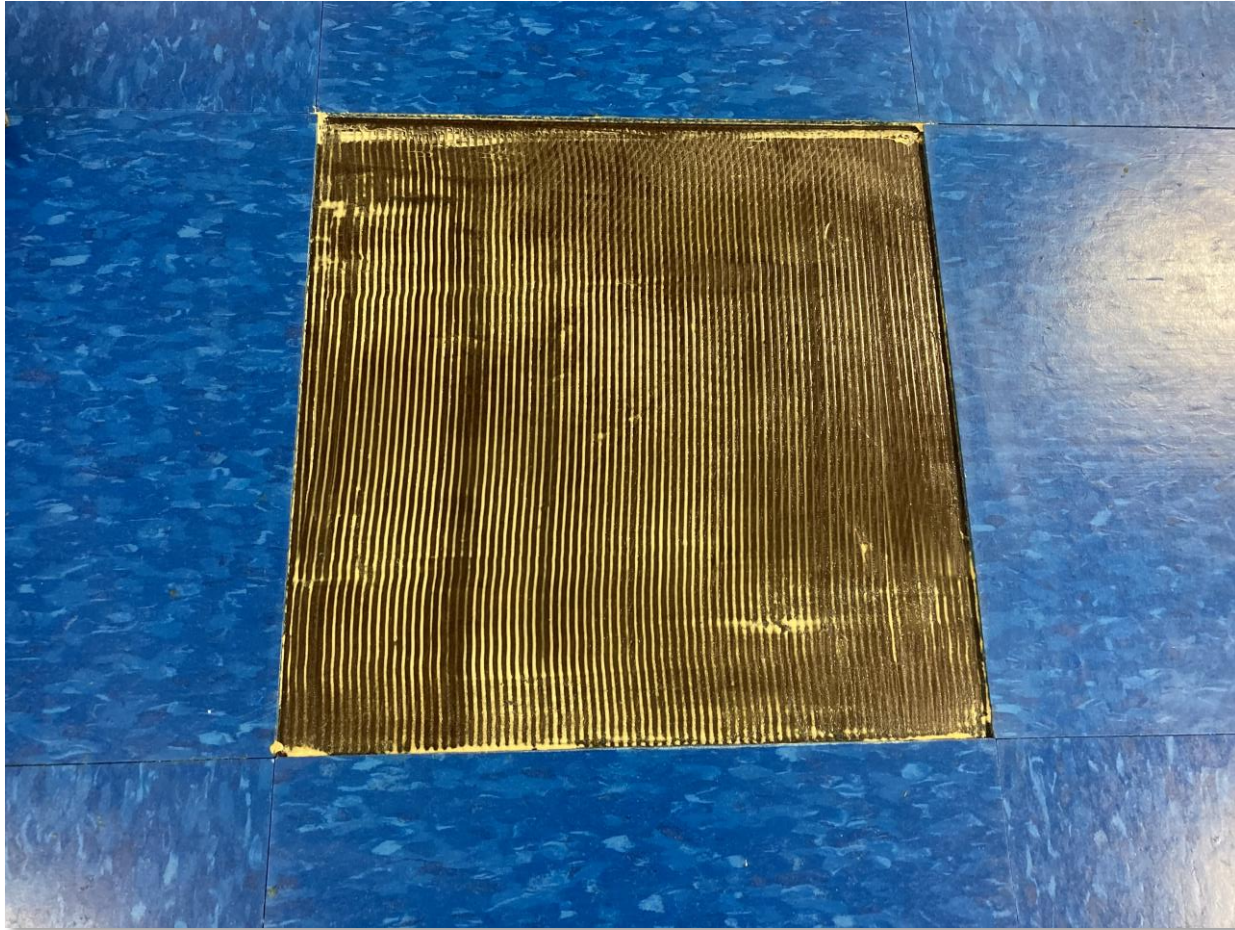
# Apply Adhesive



- Spread the VCT adhesive with a fine-notched trowel or a paint brush.



# Allow Adhesive to Dry

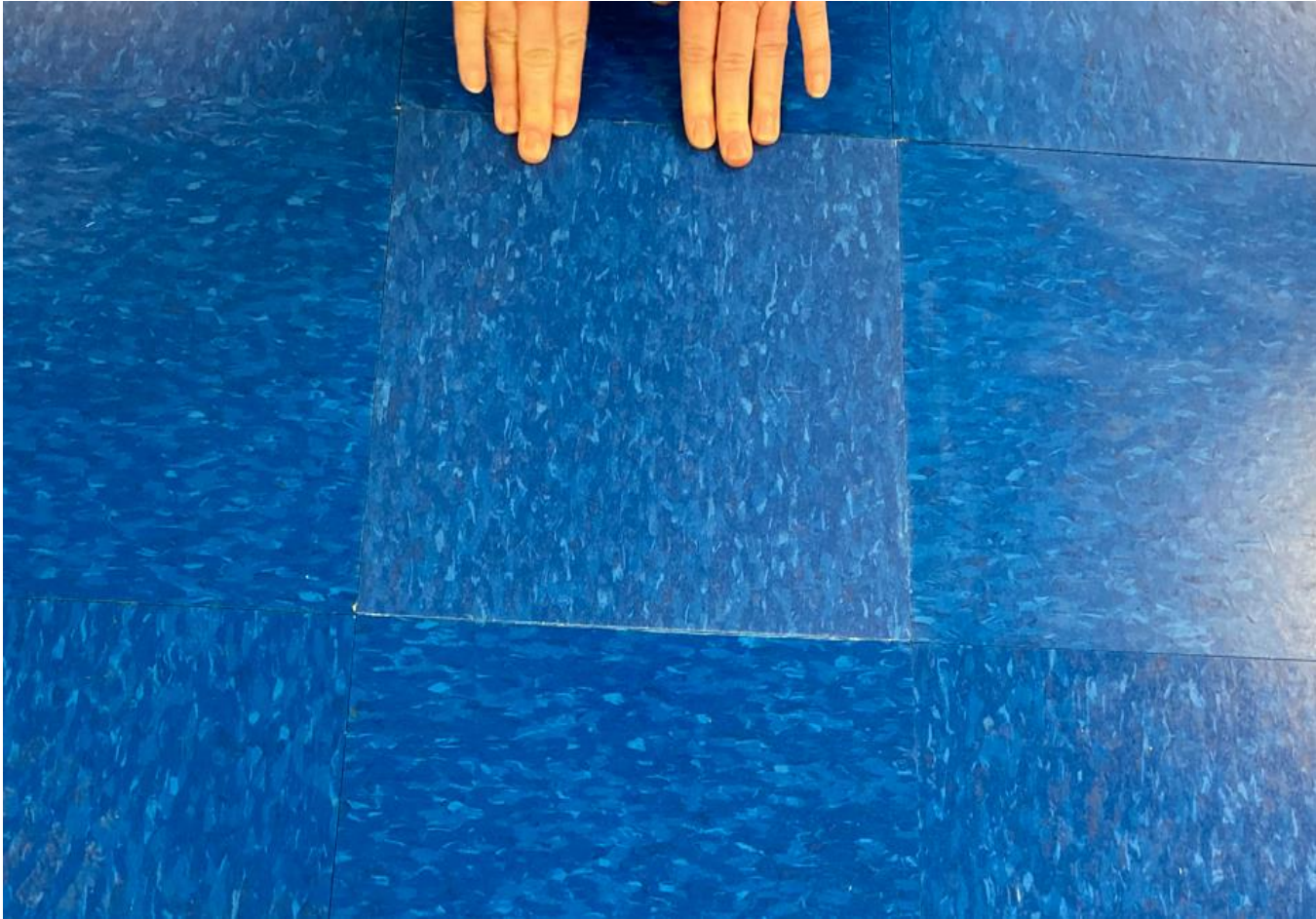


Many VCT adhesives become translucent when dry-to-touch. The adhesive shown here requires additional dry time.

- Give the adhesive ample time to set up before the tile is installed. Humidity and temperature will affect the length of time needed.
- To test for proper set, lightly press your finger onto the adhesive.
  - If adhesive feels dry to the touch, it is ready for tile installation.
  - If the adhesive sticks to your finger, additional drying time is needed.



# Position the Tile



- Position tile into adhesive, adjusting as needed.

# Clean and Roll the Tile



- Clean up adhesive residue and hand roll the tile to ensure proper contact between the adhesive and tile.



# Apply Polish and Protect From Traffic



- Follow application procedures for Armstrong Flooring S-480 Commercial Floor Polish or equivalent polish.
- For in-home use, apply Armstrong Flooring Shinekeeper Acrylic Polish to protect the tile.
- Replacement tile can also be polished and allowed to dry prior to the tile replacement.
- Protect the repair area from traffic for the time recommended on the adhesive and polish labels.