

Product Information

Edge Detail - Micro-beveled edges and ends

International Specifications - Meets ANSI/HPVA EF 2020

Overall Thickness (nominal) -

7/16 in. (1.08 cm) - LM19C-466W, LM19M-416W,

LM19P-426W, LM19P-436W, LM19P-446W, LM19P-456W

3/8 in. (0.93 cm) - EK6LD607W, LM22A-223W, LM22B-283W,

LM22H-253S, LM22K-213S, LM22M-233W

1/2 in. (1.18 cm) - EK7CP423W, EK7CP443W, EK7CP453W, EK7CP473W,

EK7CP483W, EK7CP488W, EK7LD687W, LM19W-806W

Finish - Urethane – Aluminum Oxide

Coating - Cleantivity™ Antimicrobial Protection Coating Technology

Gloss - Low

Installation - Float, Glue, Staple; Below / On / Above Ground Level

See detailed Installation Instruction at ArmstrongFlooring.com.

Maintenance - Vacuum, sweep or dust mop. See Proper Care and Maintenance recommendations on ArmstrongFlooring.com.

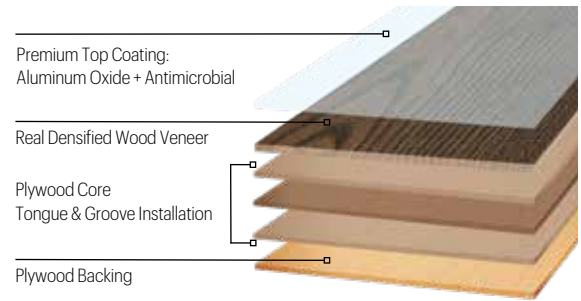
Packaging

SKUs	Width	Length	Sq. Ft./Carton	Lbs./Carton	Cartons/Pallet	Sq. Ft./Pallet	Pallets/Truck/Container
EK6LD607W LM22A-223W LM22M-233W LM22H-253S LM22B-283W LM22K-213S	6.5 in. (16.51 cm)	10 - 60 in. (25.4 - 152.4 cm) varying lengths	34 ft ² (3.16 m ²)	52 lbs. (23.6 kg)	30	1,020	27
EK7CP423W EK7CP443W EK7CP453W EK7CP473W EK7CP483W EK7CP488W EK7LD687W	7.5 in. (19.05 cm)	10 - 60 in. (25.4 - 152.4 cm) varying lengths	29.5 ft ² (2.74 m ²)	70 lbs. (31.7 kg)	25	737.50	23
LM19M-416W LM19P-426W LM19P-436W LM19P-446W LM19P-456W LM19C-466W	7.5 in. (19.05 cm)	10 - 96 in. (25.4 - 243.8 cm) varying lengths	28 ft ² (2.6 m ²)	44 lbs. (20 kg)	48	1,344	20
LM19W-806W	8.5 in. (21.59 cm)	10 - 96 in. (25.4 - 243.8 cm) varying lengths	32 ft ² (2.97 m ²)	60 lbs. (27.2 kg)	40	1,280	17

ENGINEERED WITH PLYWOOD CORE

SKUs

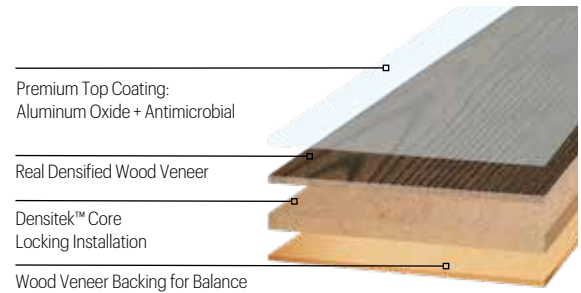
LM19C-466W, LM19M-416W, LM19P-426W, LM19P-436W,
LM19P-446W, LM19P-456W, LM19W-806W, LM22A-223W,
LM22B-283W, LM22H-253S, LM22K-213S, LM22M-233W



ENGINEERED WITH DENSITEK CORE

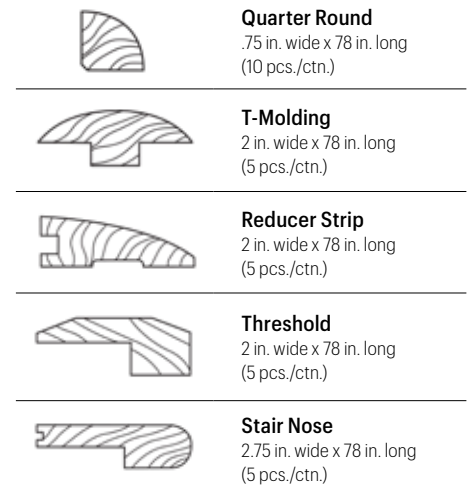
SKUs

EK6LD607W, EK7CP423W, EK7CP443W, EK7CP453W,
EK7CP473W, EK7CP483W, EK7CP488W, EK7LD687W



Trims & Moldings

Hardwood Bois dur	Quarter Round Quart de rond	T-Molding Moulure en « T »	Reducer Strip Bande de réduction	Threshold Seuil	Stair Nose Nez de marche
EK7CP423W	TQOWK952L	TMOWK952L	TR5WK952L	TH0WK952L	TS5WK952L
EK7CP443W	TQOWK969LW	TMOWK969LW	TR5WK969LW	TH0WK969LW	TS5WK969LW
EK7CP453W	TQOWK970LW	TMOWK970LW	TR5WK970LW	TH0WK970LW	TS5WK970LW
EK7CP473W	TQOWK533LW	TMOWK533LW	TR5WK533LW	TH0WK533LW	TS5WK533LW
EK7CP483W	TQOWK972LW	TMOWK972LW	TR5WK972LW	TH0WK972LW	TS5WK972LW
EK7CP488W	TQORK973LW	TMORK973LW	TR5RK973LW	THORK973LW	TS5RK973LW
EK6LD607W	TQOWK564LW	TMOWK564LW	TR3WK564LW	TH0WK564LW	TS3WK564LW
EK7LD687W	TQOWK607LW	TMOWK607LW	TR5WK607LW	TH0WK607LW	TS5WK607LW
LM22A-223W	TQOAS1073W	TMOAS1073W	TR3AS1073W	THOAS1073W	TS3AS1073W
LM22M-233W	T7490	T5290	T8290	T9790	T8390
LM22H-253S	TQOHC580LH	TMOHC580LH	TR3HC580LH	THOHC580LH	TS3HC580LH
LM22B-283W	T7463	TMOBR1074LW	T8263	THOBR1074LW	TS3BR1074LW
LM19M-416W	TQOMA1082LW	TMOMA1082LW	TR4MA1082LW	THOMA1082LW	TS4MA1082LW
LM19P-426W	TQOPN1083LW	TMOPN1083LW	TR4PN1083LW	THOPN1083LW	TS4PN1083LW
LM19P-436W	TQOPN1084LW	TMOPN1084LW	TR4PN1084LW	THOPN1084LW	TS4PN1084LW
LM19P-446W	TQOPN1085LW	TMOPN1085LW	TR4PN1085LW	THOPN1085LW	TS4PN1085LW
LM19P-456W	TQOPN1086LW	TMOPN1086LW	TR4PN1086LW	THOPN1086LW	TS4PN1086LW
LM19C-466W	TQOCH1087LW	TMOCH1087LW	TR4CH1087LW	THOCH1087LW	TS4CH1087LW
LM19W-806W	TQOWA1081LW	TMOWA1081LW	TR5WA1081LW	THOWA1081LW	TS5WA1081LW
LM22K-213S	TQORK961LW	TMORK961LW	TR3RK961LW	THORK961LW	TS3RK961LW



Testing

Performance	Test Method	Requirement	Performance vs. Requirement
Fire Test Data – Flame Spread	ASTM E648	0.45 W/cm ² or more Class 1	Meets
Fire Test Data – Smoke Evolution	ASTM E662	450 or less	Meets
Fire Test Data – Canada	CAN/ULC S-102.2	Use dependent	EK7CP423W, EK7CP443W, EK7CP453W, EK7CP473W, EK7CP483W, EK7CP488W, EK7LD687W: Flame Spread - 150; Smoke Developed – 540 EK6LD607W: Flame Spread - 180; Smoke Developed – 560 LM22A-223W, LM22M-233W, LM22H-253S, LM22B-283W, LM22K-213S: Flame Spread - 175; Smoke Developed – 620 LM19M-416W, LM19P-426W, LM19P-436W, LM19P-446W, LM19P-456W, LM19C-466W: Flame Spread - 210; Smoke Developed – 650 LM19W-806W: Flame Spread - 160; Smoke Developed – 465
Fire Test Data – Walls	ASTM E84	450 or less – Class C	Meets
Stain Resistance	ASTM F925	—	Meets
Micro Scratch Resistance (A & B)	EN 1604	Part A - Gloss Part B - Scratch	Exceeds – A1 & B1
Taber Abrasion Resistance	EN 13329	—	Exceeds – (TimberTones results = 1,607 cycles)

Testing Continued

Performance	Test Method	Requirement	Performance vs. Requirement																		
Coating	ASTM G21	—	Compliant																		
Acoustics	ASTM E492 (IIC) ASTM E90 (STC) ASTM E2179 (DELTA IIC)	International Building Code (IIC ≥50) International Building Code (STC ≥ 50) Sound Transmission Reduction	<table border="1"> <thead> <tr> <th>Skus</th> <th>6 in. Concrete with Ceiling</th> <th>6 in. Concrete No Ceiling</th> </tr> </thead> <tbody> <tr> <td>EK7CP423W, EK7CP443W, EK7CP453W, EK7CP473W, EK7CP483W, EK7CP488W, EK7LD687W</td> <td>Exceeds - IIC 66 Exceeds- STC 62</td> <td>Exceeds - IIC 53 Exceeds- STC 55 ΔIIC - 22</td> </tr> <tr> <td>EK6LD607W</td> <td>Exceeds - IIC 66 Exceeds- STC 60</td> <td>Exceeds - IIC 54 Exceeds- STC 50 ΔIIC - 23</td> </tr> <tr> <td>LM22A-223W, LM22M-233W, LM22H-253S, LM22B-283W LM22K-213S</td> <td>Exceeds - IIC 66 Exceeds- STC 61</td> <td>Exceeds - IIC 55 Exceeds- STC 51 ΔIIC - 23</td> </tr> <tr> <td>LM19M-416W, LM19P-426W, LM19P-436W, LM19P-446W, LM19P-456W, LM19C-466W</td> <td>Exceeds - IIC 66 Exceeds- STC 61</td> <td>Exceeds - IIC 53 Exceeds- STC 52 ΔIIC - 23</td> </tr> <tr> <td>LM19W-806W</td> <td>Exceeds - IIC 53 Exceeds- STC 55</td> <td>Exceeds - IIC 53 Exceeds- STC 52 ΔIIC - 23</td> </tr> </tbody> </table> <p>Underlayment: (floating installation system only): Premium Underlayment.</p>	Skus	6 in. Concrete with Ceiling	6 in. Concrete No Ceiling	EK7CP423W, EK7CP443W, EK7CP453W, EK7CP473W, EK7CP483W, EK7CP488W, EK7LD687W	Exceeds - IIC 66 Exceeds- STC 62	Exceeds - IIC 53 Exceeds- STC 55 ΔIIC - 22	EK6LD607W	Exceeds - IIC 66 Exceeds- STC 60	Exceeds - IIC 54 Exceeds- STC 50 ΔIIC - 23	LM22A-223W, LM22M-233W, LM22H-253S, LM22B-283W LM22K-213S	Exceeds - IIC 66 Exceeds- STC 61	Exceeds - IIC 55 Exceeds- STC 51 ΔIIC - 23	LM19M-416W, LM19P-426W, LM19P-436W, LM19P-446W, LM19P-456W, LM19C-466W	Exceeds - IIC 66 Exceeds- STC 61	Exceeds - IIC 53 Exceeds- STC 52 ΔIIC - 23	LM19W-806W	Exceeds - IIC 53 Exceeds- STC 55	Exceeds - IIC 53 Exceeds- STC 52 ΔIIC - 23
Skus	6 in. Concrete with Ceiling	6 in. Concrete No Ceiling																			
EK7CP423W, EK7CP443W, EK7CP453W, EK7CP473W, EK7CP483W, EK7CP488W, EK7LD687W	Exceeds - IIC 66 Exceeds- STC 62	Exceeds - IIC 53 Exceeds- STC 55 ΔIIC - 22																			
EK6LD607W	Exceeds - IIC 66 Exceeds- STC 60	Exceeds - IIC 54 Exceeds- STC 50 ΔIIC - 23																			
LM22A-223W, LM22M-233W, LM22H-253S, LM22B-283W LM22K-213S	Exceeds - IIC 66 Exceeds- STC 61	Exceeds - IIC 55 Exceeds- STC 51 ΔIIC - 23																			
LM19M-416W, LM19P-426W, LM19P-436W, LM19P-446W, LM19P-456W, LM19C-466W	Exceeds - IIC 66 Exceeds- STC 61	Exceeds - IIC 53 Exceeds- STC 52 ΔIIC - 23																			
LM19W-806W	Exceeds - IIC 53 Exceeds- STC 55	Exceeds - IIC 53 Exceeds- STC 52 ΔIIC - 23																			
Janka Hardness	ASTM D1037	Results for each species – available from your AHF Products rep.	Exceeds standard Janka test																		
Falling Ball Indentation Test (60 inches)	ASTM D2394	—	Exceeds - .002 inch																		
Static Coefficient of Friction	ASTM D2047	≥ 0.5	Meets																		

Sustainability

WELL v2 Feature

Materials

Feature X06.1
VOC Restrictions

Feature X06.2
VOC Restrictions

Mind

Feature M02
Nature and Place

TimberTones

✓

✓

✓

Contribution

Limit VOCs from Wet-Applied Products
Adhesive is SCAQMD Rule 1168 Compliant
FloorScore Certification

Restrict VOC Emissions from Furniture, Architectural and Interior Products
FloorScore Certification (SCS-FS-05600)

Provide Connection to Nature

LEED™ v4.1

Location of Manufacturer

Low Emitting Flooring

Low Emitting Adhesives - Testing and third-party certified by FloorScore® - SCAQMD #1168 Compliant

TimberTones

Somerset, Kentucky

Tested and third party certified by FloorScore as complying with CDPH v1.2 FloorScore Certification (SCS-FS-05600)

Bruce® ProConnect™ Plus, Bruce Equalizer Pro™, Bruce Summit Select™
Adhesives meet <50 g/L requirement

Limited Warranty

10-year Commercial Warranty when installed in strict accordance with the detailed instructions.

Visit [ArmstrongFlooring.com](https://www.armstrongflooring.com)

for complete Product, Technical, Adhesives, Installation & Maintenance recommendations.

AF-1111-525
© 2025 AHF Products LLC. | FloorScore® is a registered trademark of the Resilient Floor Covering Institute.
LEED® is a registered trademark of the United States Green Building Council. The Health Product Declaration® is a registered trademark of HPD Collaborative.
All other trademarks are owned by AHF Products LLC.

